




SUNDARESH
KAMARAJ

THE PESTLE PLAYBOOK

A Systematic Framework For Translating External
Macro-Environmental Noise Into Actionable Strategic Clarity.



 sundaresh.blog

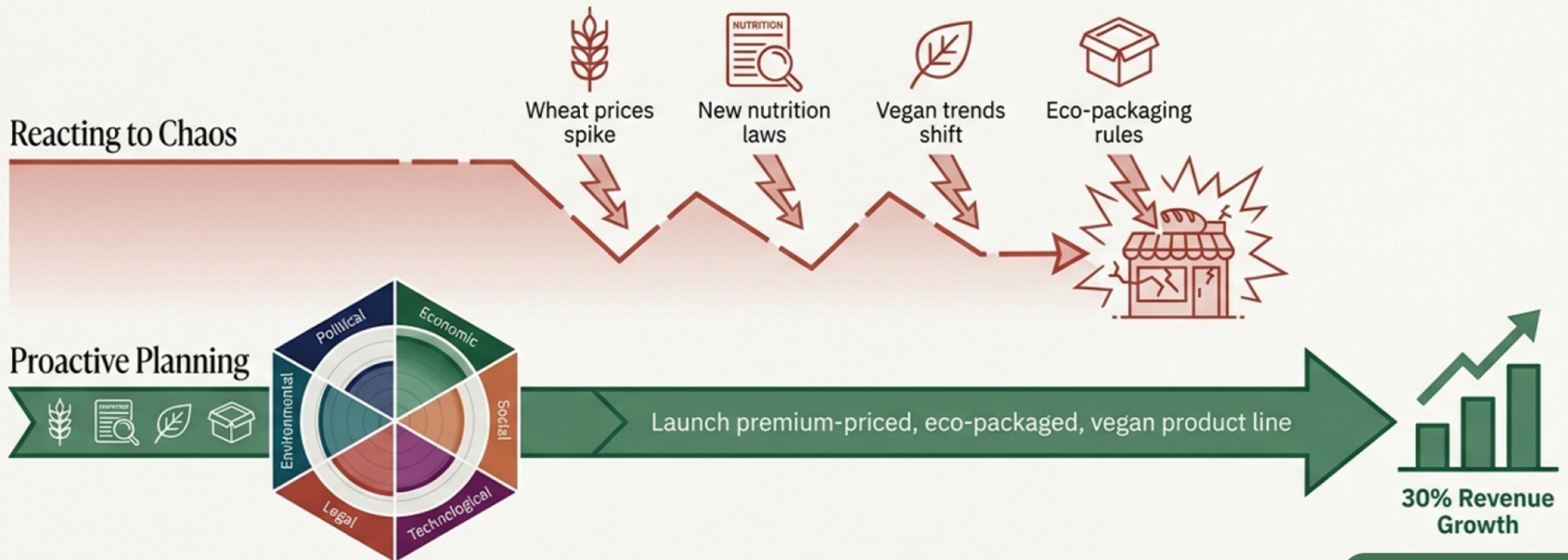


**SUNDARESH
KAMARAJ**

“External forces will reshape your business whether you monitor them or not”

A small bakery achieved 30% revenue growth not by fighting isolated crises, but by stepping back to see the patterns. PESTLE analysis transforms unpredictable external threats into a cohesive growth strategy.

Reacting to Chaos vs. Proactive Planning

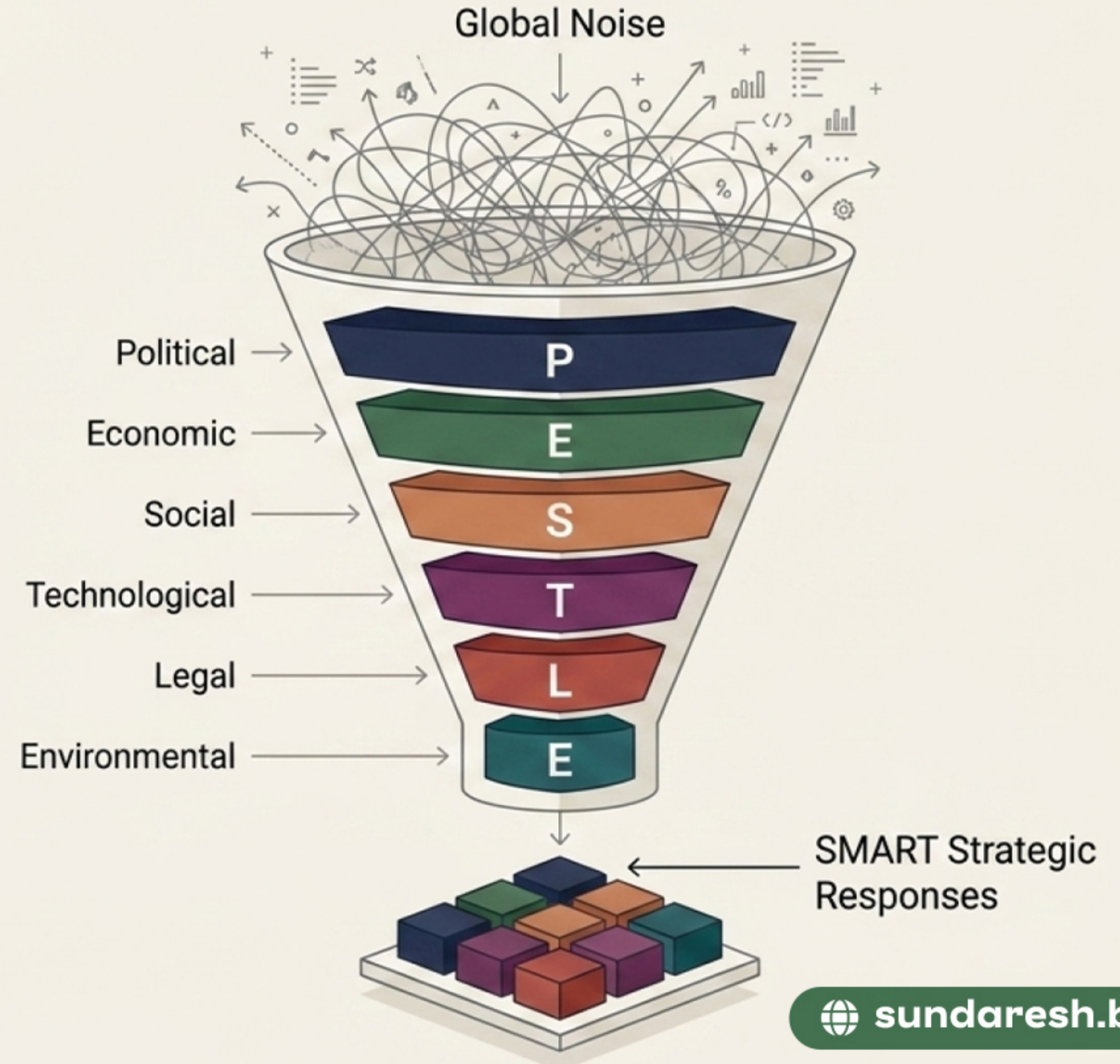




**SUNDARESH
KAMARAJ**

Filtering macro-environmental noise into strategic signals

PESTLE is a strategic management tool used to identify, analyze, and monitor key external factors. Evolving from the 1960s PEST model to account for modern regulatory and ecological complexities, it answers one fundamental question: What external forces could impact our ability to achieve our objectives, and how should we respond?





**SUNDARESH
KAMARAJ**

The 6-Lens Radar: Defining the rules of the game and the flow of capital



Political (The Rules of the Game)

Definition:

Extent to which governing bodies influence the economy or industry.

Triggers to Monitor:

Regime stability, trade tariffs, tax policies, public procurement, lobbying dynamics.

Business Impact:

Determines market access and supply chain viability. Changing trade agreements can alter unit economics within weeks.



Economic (The Flow of Capital)

Definition:

Macro conditions dictating purchasing power and operating costs.

Triggers to Monitor:

GDP growth, inflation rates, central bank interest rates, exchange rate volatility.

Business Impact:

Dictates realistic revenue forecasts and capital investment timing. High interest environments constrain both consumer spending and business borrowing.



**SUNDARESH
KAMARAJ**

The 6-Lens Radar: Tracking shifting human behaviors and digital disruption



Social (The Human Element)

Definition:

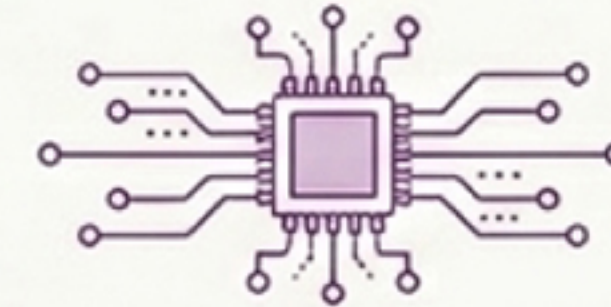
Cultural, demographic, and attitudinal characteristics of a population.

Triggers to Monitor:

Age distribution, health consciousness, workforce diversity, shifting lifestyle norms.

Business Impact:

Shapes product relevance and talent availability. Capturing social dynamics prevents tone-deaf campaigns and aligns products with evolving consumer values.



Technological (The Great Disruptor)

Definition:

Innovations and digital transformations that alter industry operations.

Triggers to Monitor:

AI/Machine learning, cybersecurity threats, automation, industry R&D investment.

Business Impact:

Renders existing models obsolete or creates entirely new revenue streams. Requires building digital capabilities before they become baseline market expectations.



**SUNDARESH
KAMARAJ**

The 6-Lens Radar: Navigating compliance mandates and ecological resilience



Legal (The Compliance Boundary)

Definition:

Laws and regulations dictating operational boundaries.

Triggers to Monitor:

Data privacy (GDPR), employment law, antitrust legislation, intellectual property rights.

Business Impact:

Non-compliance yields substantial fines and reputational damage. Proactive legal monitoring allows organizations to adapt faster than competitors.



Environmental (The Ecological Imperative)

Definition:

Ecological impacts, climate factors, and sustainability demands.

Triggers to Monitor:

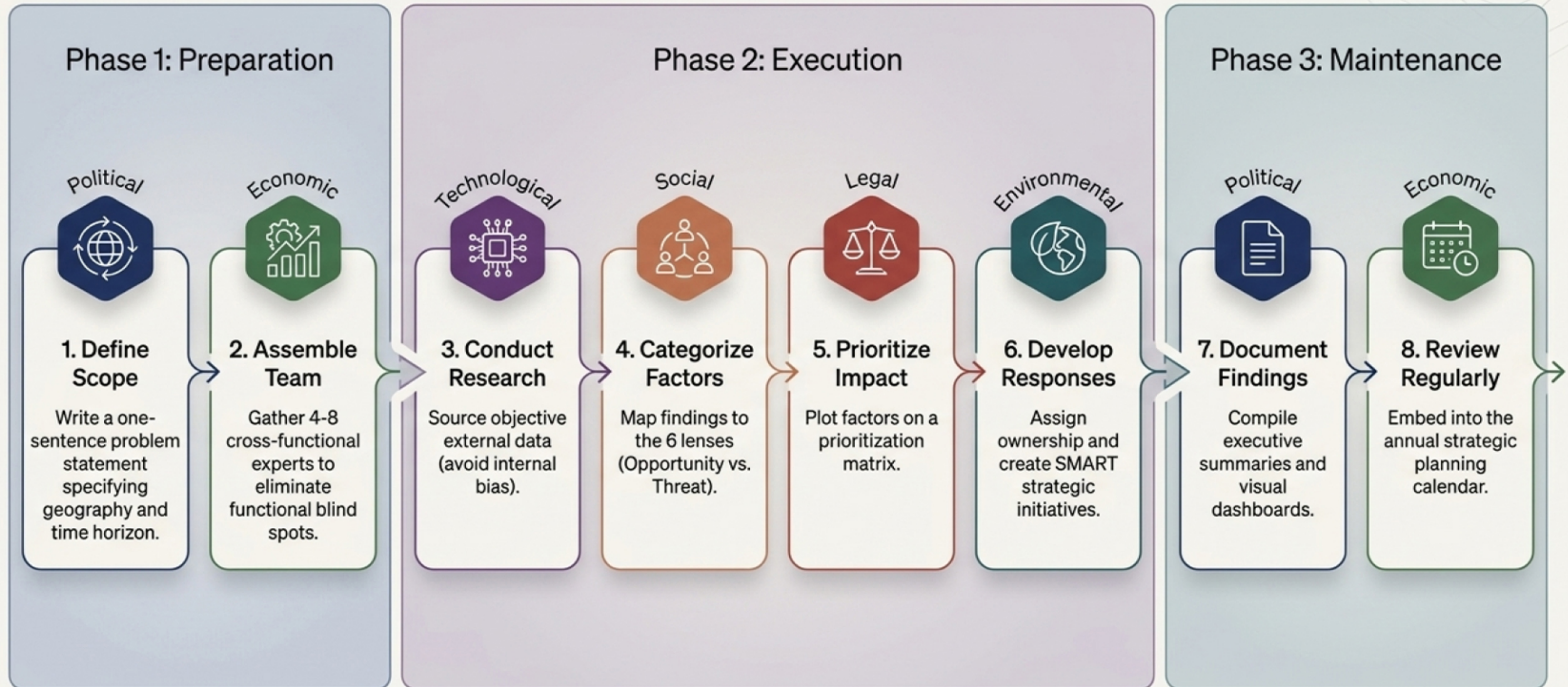
Carbon emission targets, waste management (circular economy), ESG investor demands, resource scarcity.

Business Impact:

No longer optional. Dictates access to capital, consumer trust, and long-term operational resilience against climate-related risks.



The 8-Step Implementation Blueprint





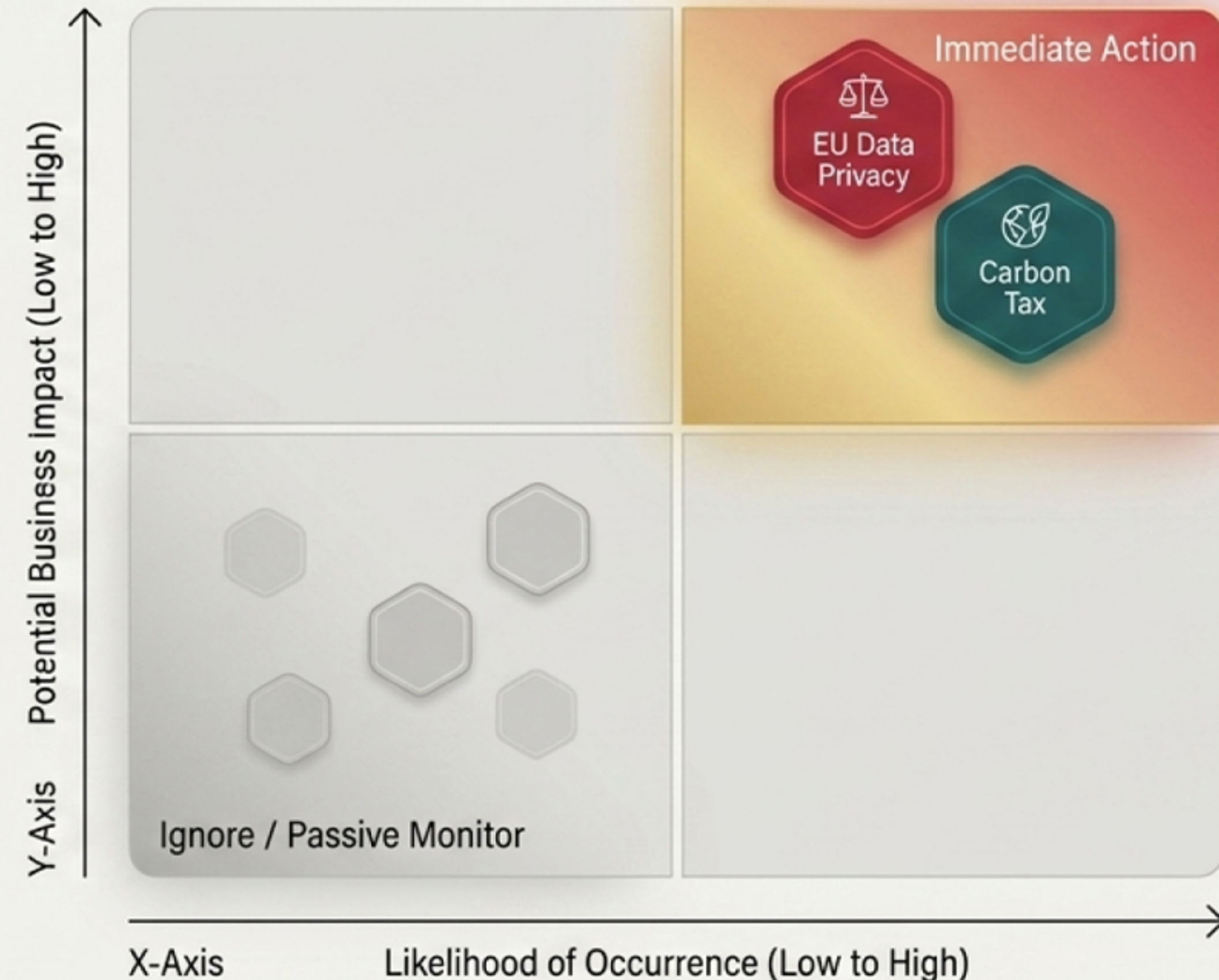
**SUNDARESH
KAMARAJ**

Synthesis: Moving from observation to executive action

The external environment contains infinite data points. The goal of PESTLE is not to track them all, but to filter them.

By plotting identified factors against Likelihood and Impact, organizations isolate the 3 or 4 critical shifts that require immediate resource allocation and strategic response.

Low-impact factors are passively monitored; high-impact factors dictate the strategy.





Proof of Concept: GreenLeaf Beverages EU Expansion



Return on Investment

Achieved **€8.2M** in Year 1 revenue (14% over target).

Pre-emptively navigating the PESTLE matrix saved an estimated **\$2M** in reactive compliance fines and post-launch label redesigns.

Proactive beats reactive.

The Problem:

A \$120M US organic beverage company planned a \$15M European expansion but lacked structured intelligence on EU market dynamics.

PESTLE Intervention:

A 6-week cross-functional scan isolated three high-impact matrix priorities: Stringent EU food labeling (Legal), mandatory carbon reporting (Environmental), and entrenched local organic brand loyalty (Social).

Strategic Response:

Pre-emptively secured EU-specific organic accreditation, adopted fully recyclable packaging to meet the European Green Deal, and localized brand messaging.



**SUNDARESH
KAMARAJ**

The Strategic Ecosystem: Where PESTLE lives

PESTLE does not exist in a vacuum. It provides the outermost layer of strategic awareness.

It reveals the macro-environmental forces shaping the industry, which in turn dictate the competitive dynamics, which ultimately determine how the organization deploys its internal capabilities.

A complete strategy requires scanning all three layers.





Integrating PESTLE into your existing toolkit

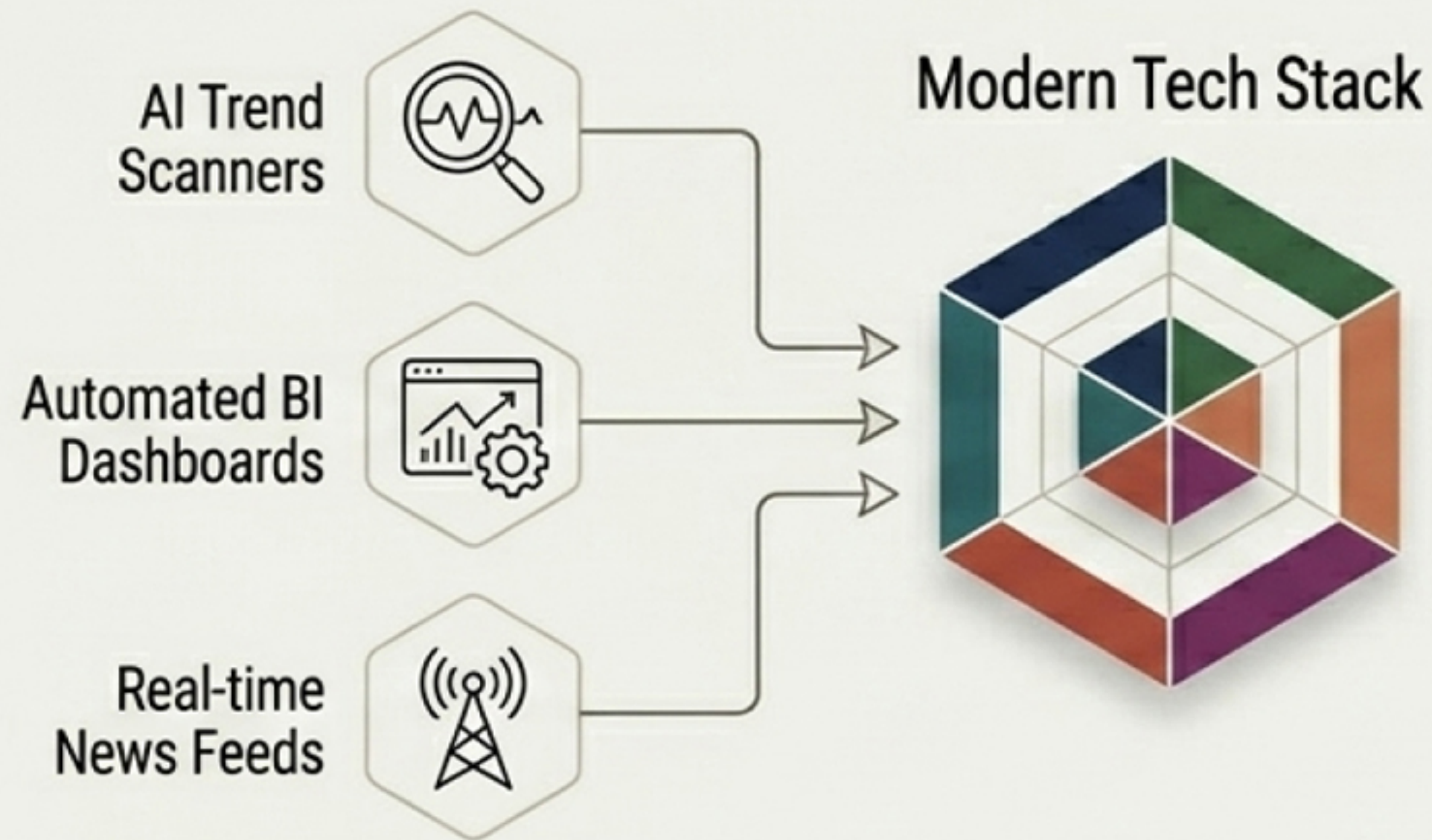
Framework Name	Core Focus	Primary Output	How PESTLE Integrates
SWOT	Internal vs External	Strategic positioning	PESTLE directly feeds the Opportunities and Threats quadrants.
Porter's 5 Forces	Micro / Industry	Competitive intensity	PESTLE identifies the macro trends that are altering supplier/buyer power.
Scenario Planning	Future States	Plausible future narratives	High-impact PESTLE variables become the foundation for stress-testing future scenarios.
Risk Management	Enterprise Vulnerability	Risk Register	PESTLE threats map directly into corporate risk matrices with pre-calculated likelihood/impact scores.



**SUNDARESH
KAMARAJ**

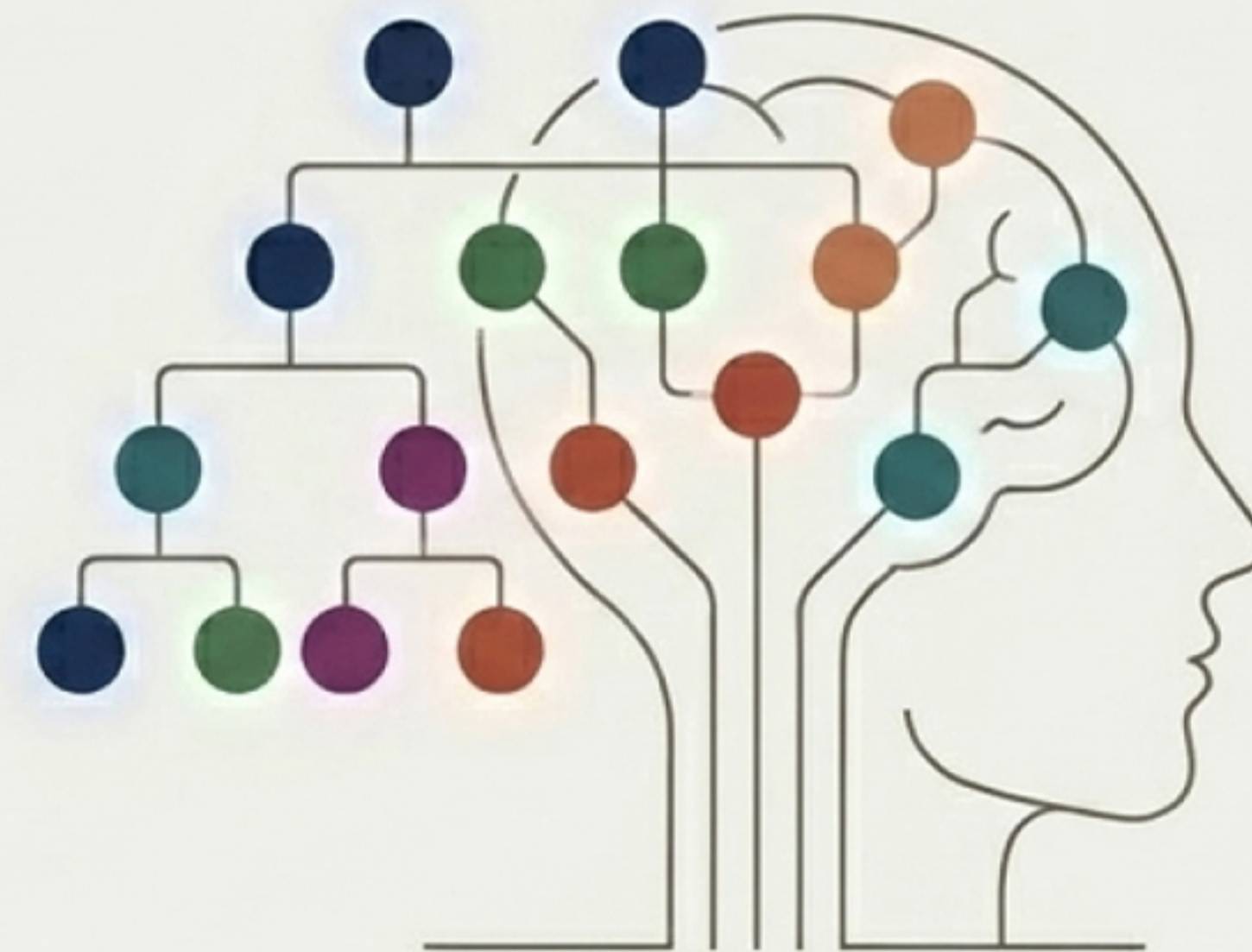
From periodic exercise to continuous organizational capability

Digital Integration



Digital Integration: Modern scanning is augmented by technology. BI platforms automate economic data tracking, while AI-powered tools flag emerging political and social trends in real-time.

Strategic Culture

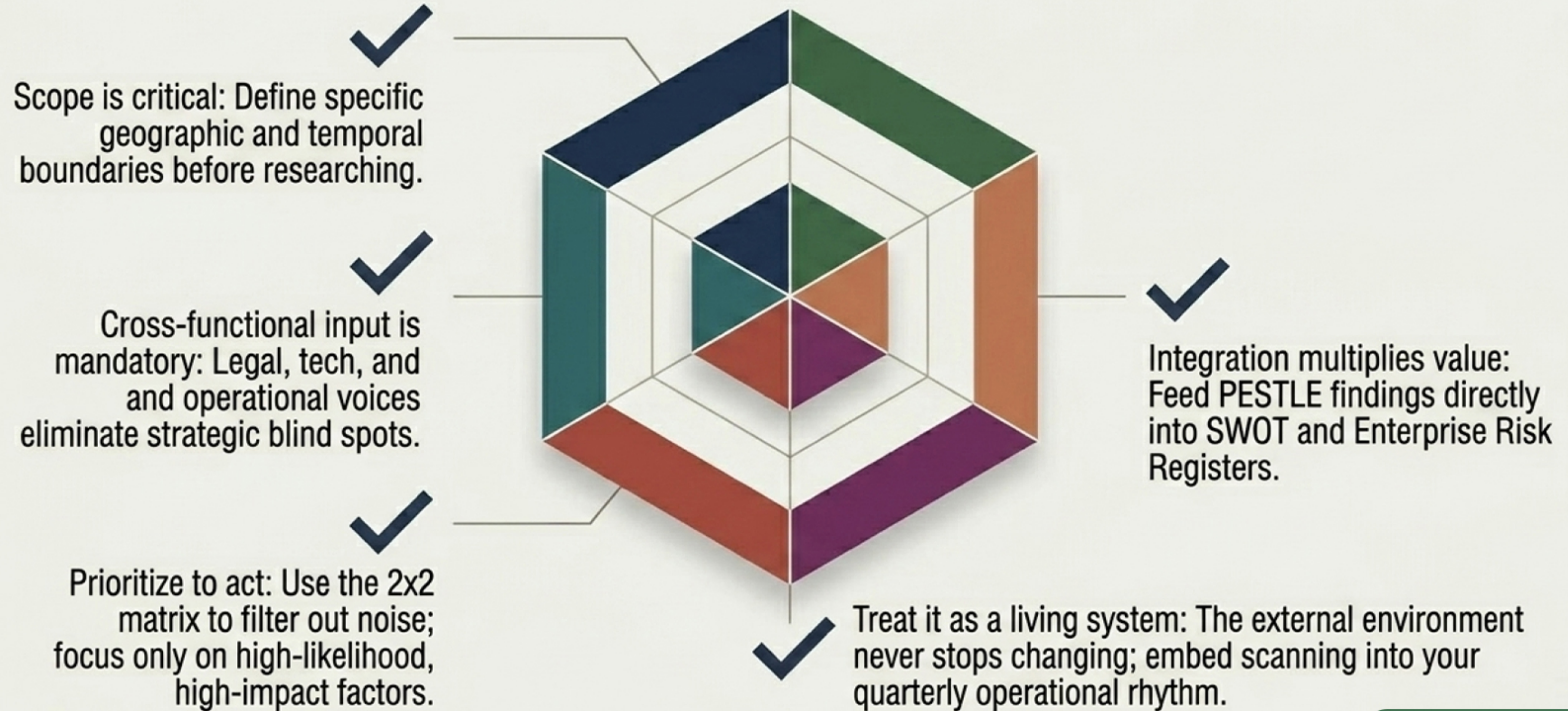


Strategic Culture: PESTLE is a mindset. Embedding environmental scanning into quarterly reviews, M&A due diligence, and product gate-reviews ensures the organization continually asks: What external forces could affect this decision?



**SUNDARESH
KAMARAJ**

The Consultant's Checklist: Rules for Macro-Scanning





**SUNDARESH
KAMARAJ**

*Thank
you!*

 [instagram.com/sundareshka](https://www.instagram.com/sundareshka)

 [facebook.com/ksundaresh](https://www.facebook.com/ksundaresh)

 [linkedin.com/in/sundaresh-kamaraj](https://www.linkedin.com/in/sundaresh-kamaraj)

 sundaresh.blog